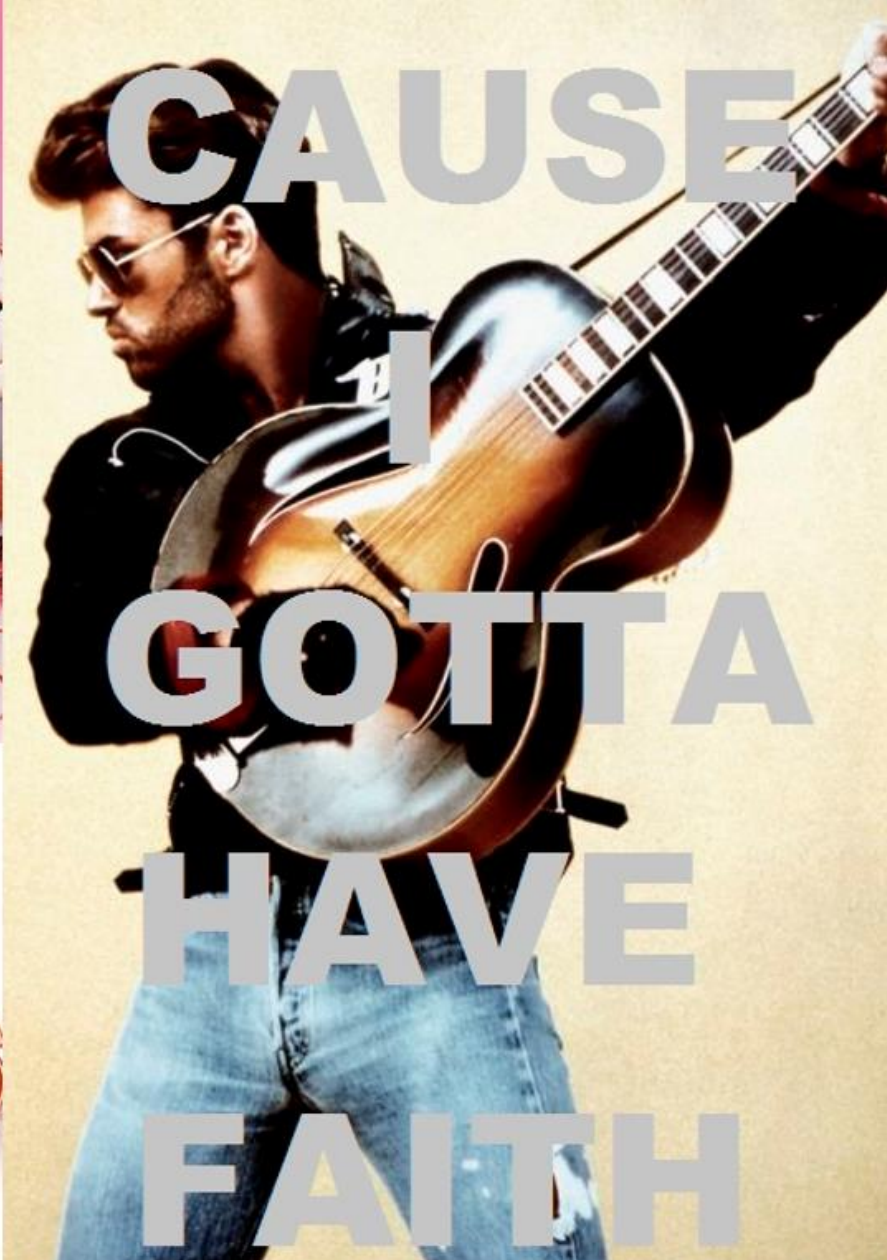
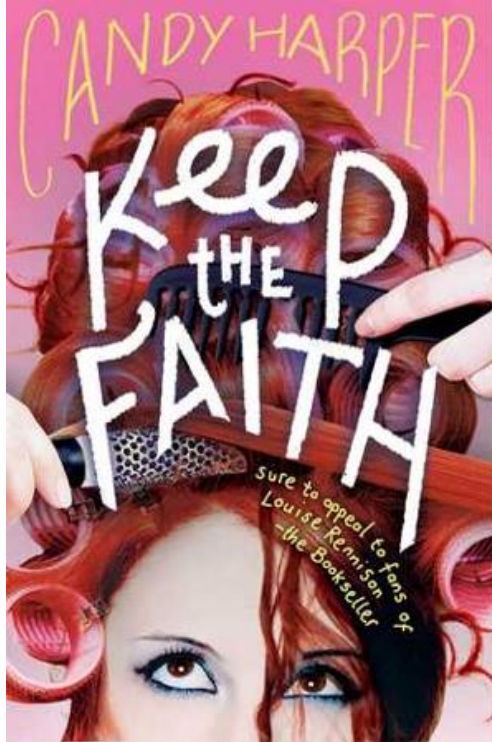
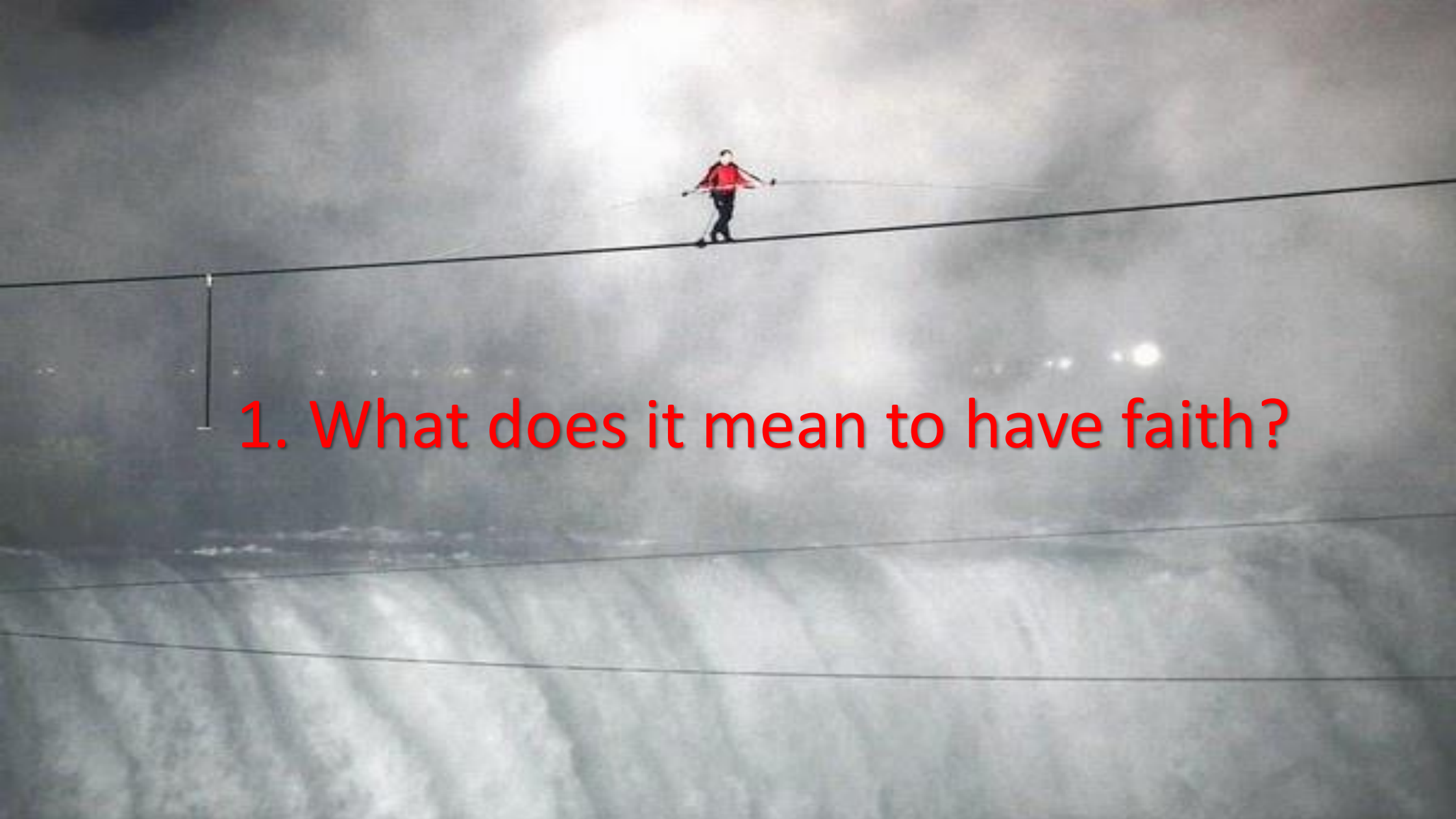




walk by faith

I believe in God





1. What does it mean to have faith?

**Nik Wallenda**  
will walk along the  
**1,800ft** long, two-inch-wide  
wire rope

← The 40-minute walk will  
start from Goat Island in the  
U.S. and finish below a  
visitor centre on the  
Canadian side →

The tightrope will be  
held in place by two  
large cranes



220ft



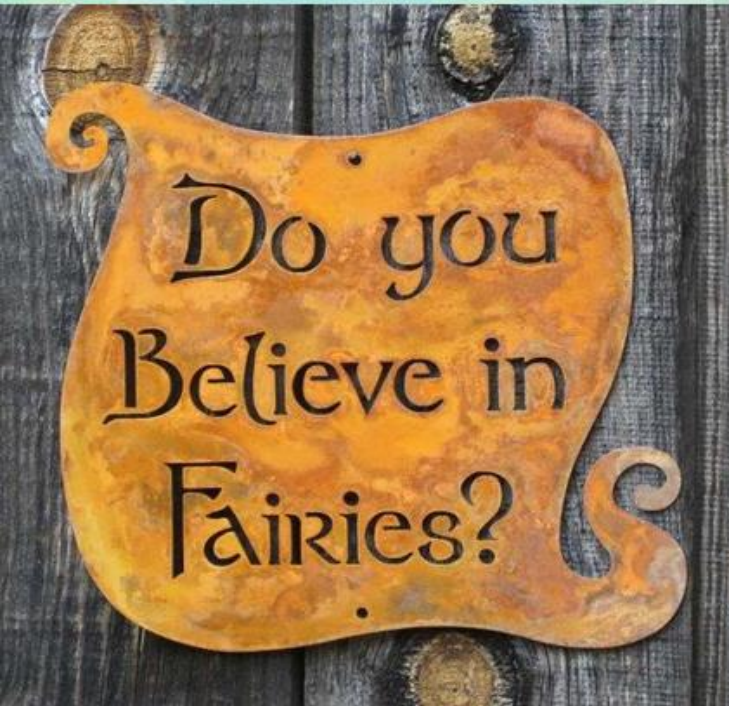
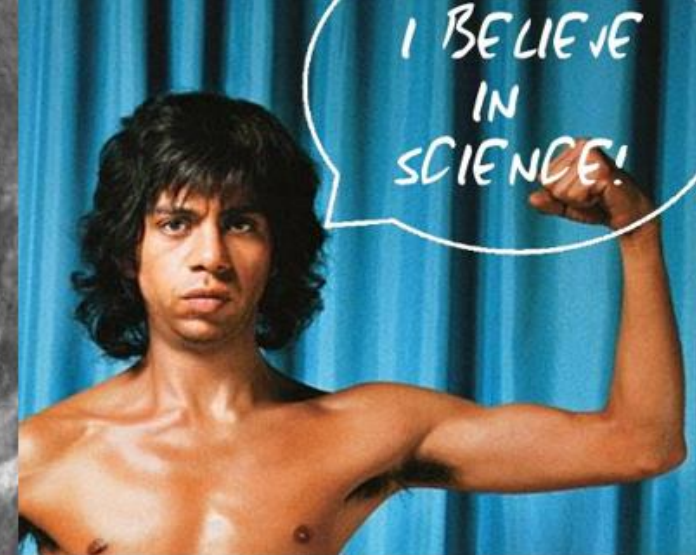
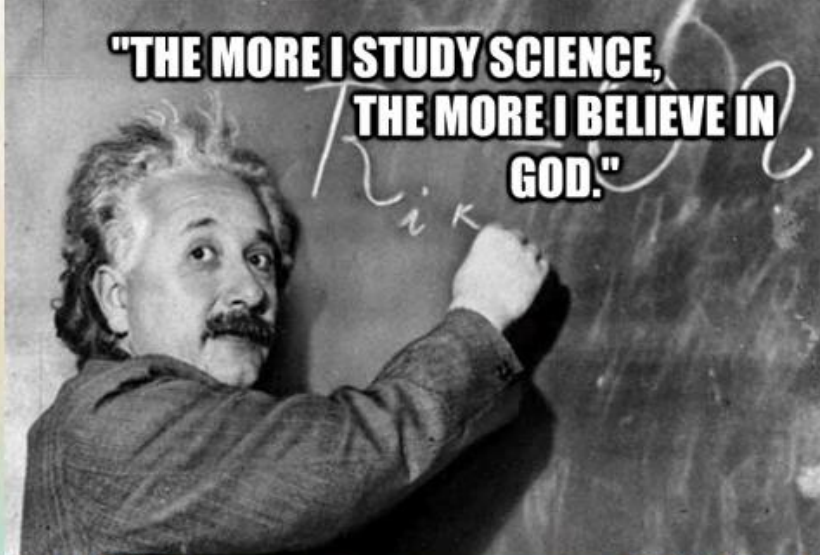
Charles Blondin (30 June 1859)  
First tightrope crossing  
Niagara Gorge (340m l, 50m high)





A person in a red jacket and dark pants is walking a tightrope high above a large waterfall. The scene is dramatic, with a bright light source in the sky and the misty spray of the waterfall below. The tightrope is a thin black line stretching across the frame.

2. In who do you put your faith?





A person in a red jacket is walking a tightrope over a large waterfall. The background is a blurred, high-angle view of the waterfall and surrounding landscape. The text is overlaid on the upper left portion of the image.

Romans 8:11

If the Spirit of him who raised Jesus from the dead dwells in you, he who raised Christ Jesus from the dead will also give life to your mortal bodies through his Spirit who dwells in you.

A person in a red jacket is walking a tightrope over a large waterfall. The waterfall is on the left side of the image, with water cascading down. The background is a bright, overcast sky. The person is positioned on the right side of the image, walking towards the left. The tightrope is a thin line that stretches across the width of the image. The overall scene conveys a sense of balance and risk.

Faith in God

The Father  
The Son  
The Holy Spirit

A person in a red jacket is walking a tightrope over a large waterfall. The background is a blurred, green and white waterfall. The text is overlaid on the image.

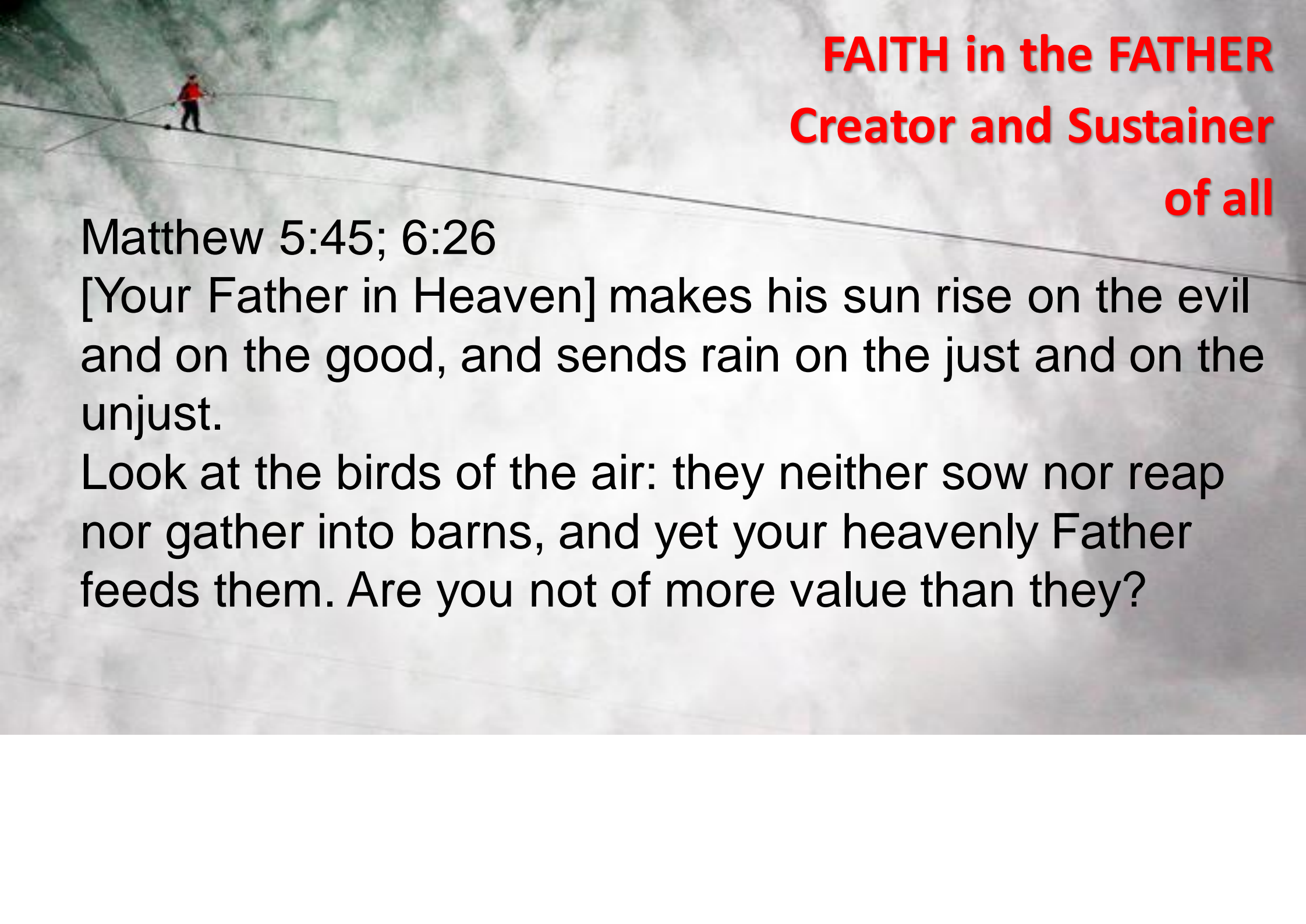
God is

self-extending  
other-regarding  
community-forming  
love

**FAITH in GOD's  
CHARACTER**

A person in a red jacket and dark pants is walking a tightrope high above a large, powerful waterfall. The scene is dramatic, with the person appearing small against the vast, misty background of the falling water. The lighting is somewhat dim, suggesting an overcast day or a shaded area. The tightrope is a thin, dark line that stretches across the frame. The waterfall below is a wide, turbulent flow of white water, creating a sense of height and danger. The overall mood is one of awe and challenge.

3. Why can I believe in this God?

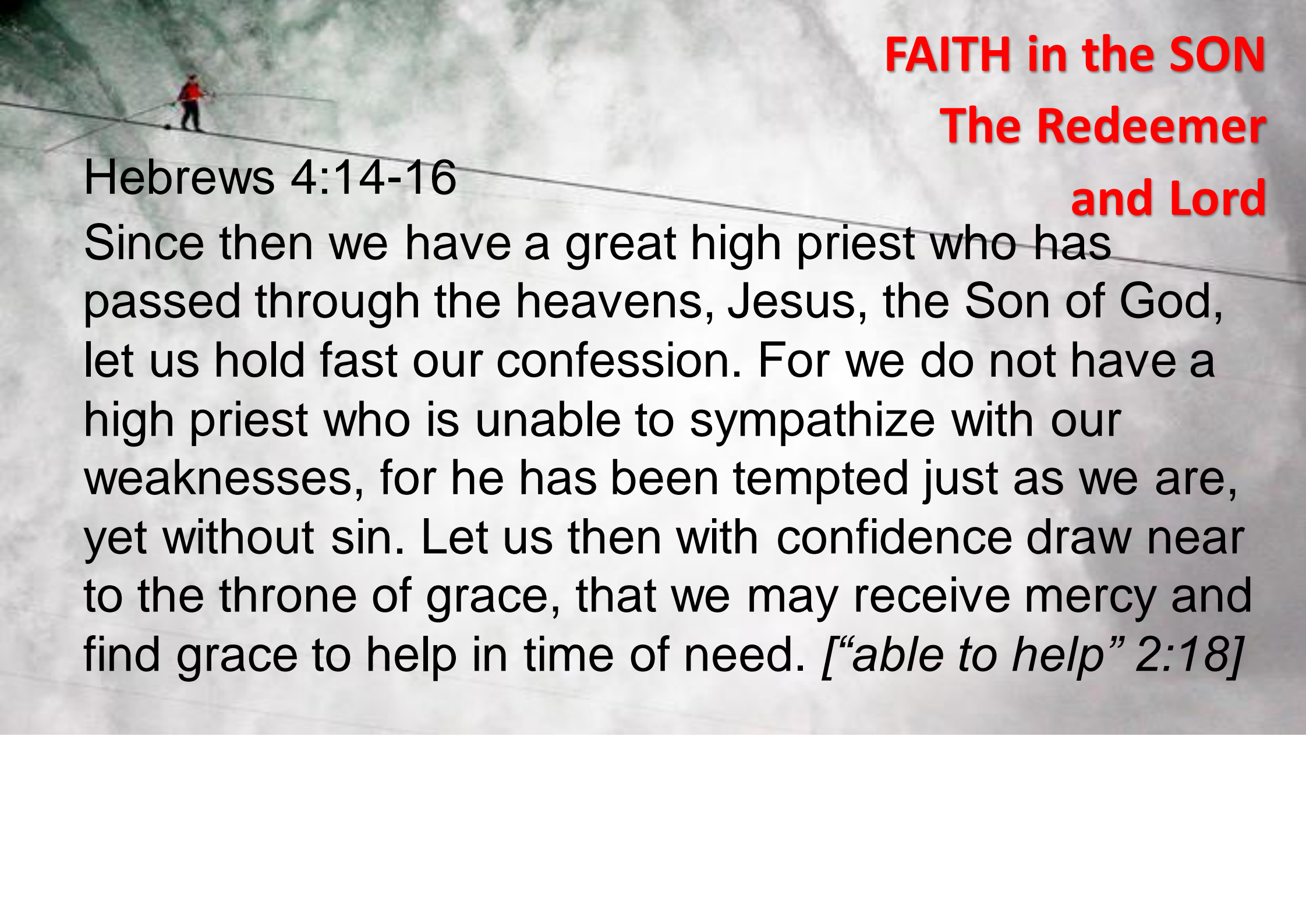
A person in a red jacket is walking a tightrope over a large waterfall. The background is a misty, white waterfall with some green foliage on the left side.

**FAITH in the FATHER**  
**Creator and Sustainer**  
**of all**

Matthew 5:45; 6:26

[Your Father in Heaven] makes his sun rise on the evil and on the good, and sends rain on the just and on the unjust.

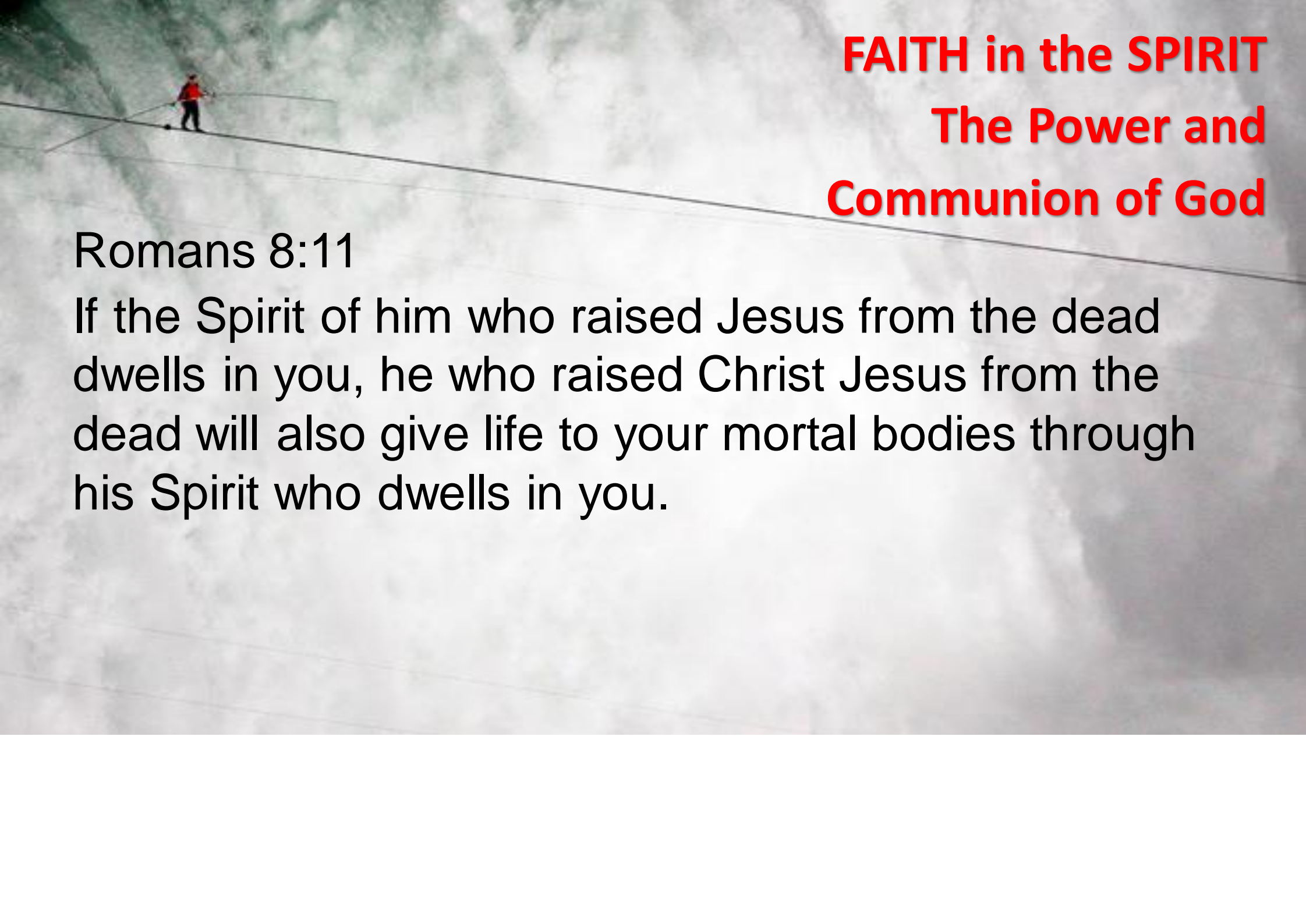
Look at the birds of the air: they neither sow nor reap nor gather into barns, and yet your heavenly Father feeds them. Are you not of more value than they?

A person in a red jacket is walking a tightrope over a large waterfall. The background is a misty, white waterfall with some green foliage on the left side.

**FAITH in the SON**  
**The Redeemer**  
**and Lord**

Hebrews 4:14-16

Since then we have a great high priest who has passed through the heavens, Jesus, the Son of God, let us hold fast our confession. For we do not have a high priest who is unable to sympathize with our weaknesses, for he has been tempted just as we are, yet without sin. Let us then with confidence draw near to the throne of grace, that we may receive mercy and find grace to help in time of need. [*“able to help” 2:18*]

A person in a red jacket is walking a tightrope over a large waterfall. The scene is dramatic and serves as a metaphor for faith.

**FAITH in the SPIRIT**  
**The Power and**  
**Communion of God**

Romans 8:11

If the Spirit of him who raised Jesus from the dead dwells in you, he who raised Christ Jesus from the dead will also give life to your mortal bodies through his Spirit who dwells in you.

A person in a red jacket is walking a tightrope over a large waterfall. The background is a blurred, green and white waterfall. The text is overlaid on the image.

God is

self-extending  
other-regarding  
community-forming  
love

**FAITH in GOD's  
CHARACTER**





**Do you believe in God?**  
The Father, Son and Holy Spirit?

## The Apostle's Creed

I believe in God, the Father almighty,  
creator of heaven and earth.

I believe in Jesus Christ, his only Son, our Lord.  
He was conceived by the power of the Holy  
Spirit  
and born of the Virgin Mary.

## The Apostle's Creed

He suffered under Pontius Pilate,  
was crucified, died, and was buried.

He descended to the dead.

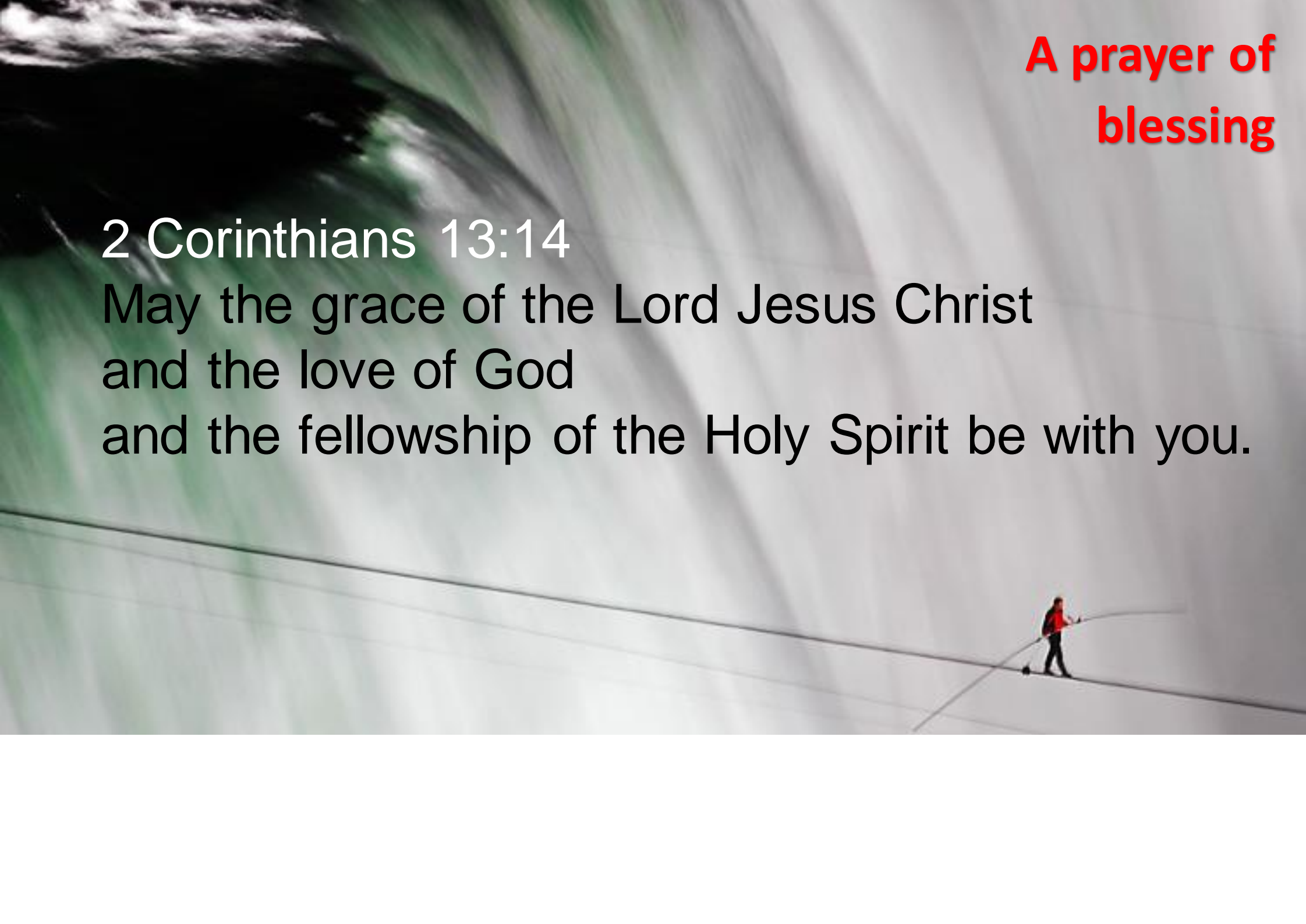
On the third day he rose again.

He ascended into heaven,  
and is seated at the right hand of the Father.

He will come again to judge the living and the  
dead.

## The Apostle's Creed

I believe in the Holy Spirit,  
in one holy Church,  
the communion of saints,  
the forgiveness of sins,  
the resurrection of the body,  
and the life everlasting.

A person in a red jacket is walking a tightrope over a large waterfall. The background is a blurred, high-angle view of the waterfall and surrounding greenery.

**A prayer of  
blessing**

**2 Corinthians 13:14**

May the grace of the Lord Jesus Christ  
and the love of God  
and the fellowship of the Holy Spirit be with you.